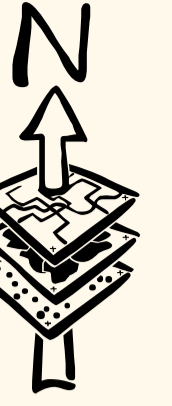
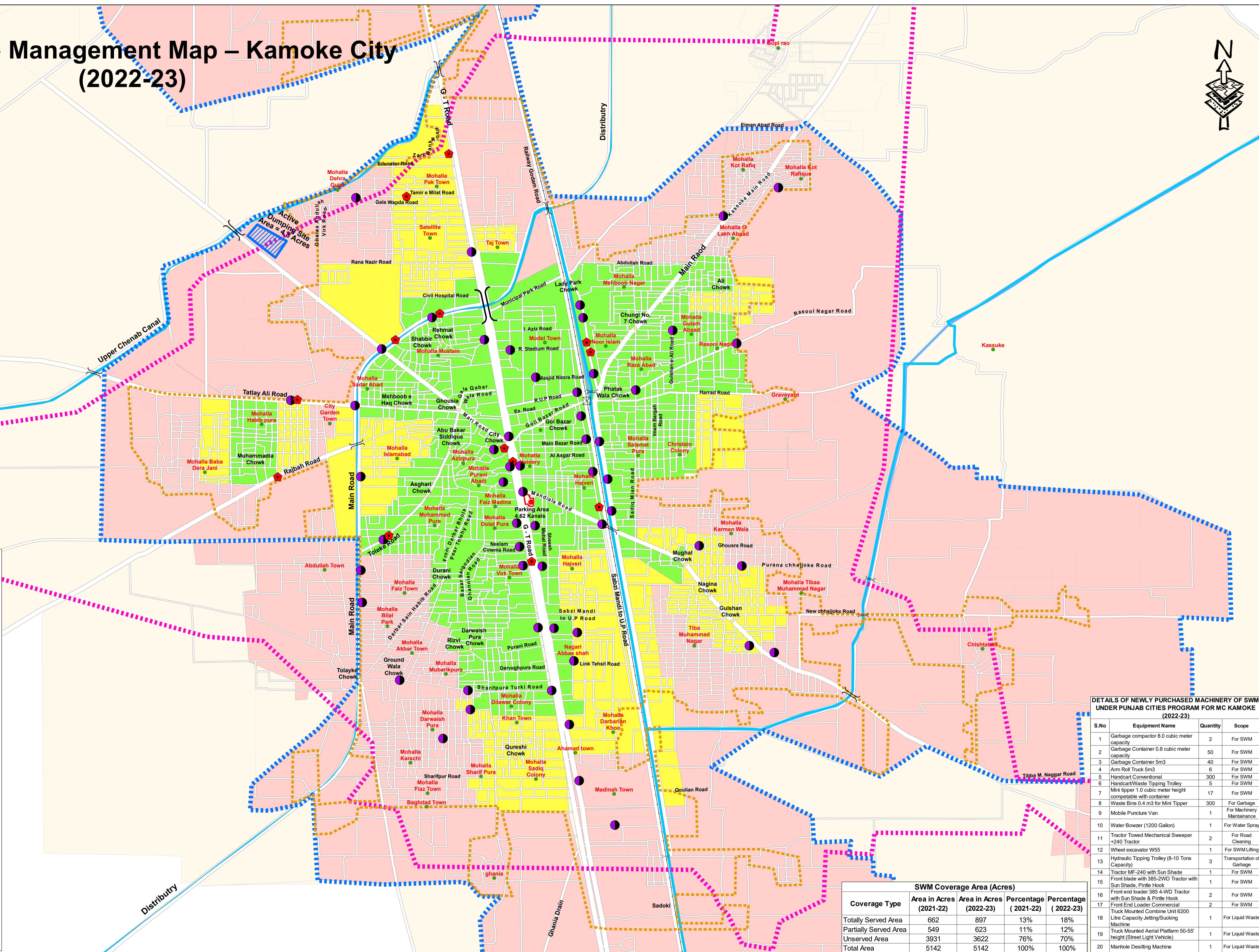


Soild Waste Management Map – Kamoke City (2022-23)



Existing Facilities

- Chowks
- Mohallas
- 5 m3 Container
- Open Heaps
- X Railway Crossing
- Bridges
- Railway Line
- Nullah
- Canal/Minor
- Parking Shed
- Active Dumping Site
- Totally Served Area
- Partially Served Area
- Unserved Area
- Road Boundary
- Parcel Boundary
- MC Boundary PLGA 2013
- MC Boundary PLGA 2019



DETAILS OF NEWLY PURCHASED MACHINERY OF SWM UNDER PUNJAB CITIES PROGRAM FOR MC KAMOKE (2022-23)

S.No	Equipment Name	Quantity	Scope
1	Garbage compactor 8.0 cubic meter capacity	2	For SWM
2	Garbage Container 0.8 cubic meter capacity	50	For SWM
3	Garbage Container 5m3	40	For SWM
4	Arm Roll Truck 5m3	5	For SWM
5	Handcart Conventional	300	For SWM
6	Handcart/Waste Tipping Trolley	5	For SWM
7	Mini tipper 1.0 cubic meter height compatible with container	17	For SWM
8	Waste Bins 0.4 m3 for Mini Tipper	300	For Garbage
9	Mobile Puncture Van	1	For Machinery Maintenance
10	Water Bowser (1200 Gallon)	1	For Water Spray
11	Tractor Towed Mechanical Sweeper +240 Tractor	2	For Road Cleaning
12	Wheel excavator W55	1	For SWM Lifting
13	Hydraulic Tipping Trolley (8-10 Tons Capacity)	3	Transportation of Garbage
14	Tractor MF-240 with Sun Shade	1	For SWM
15	Front blade with 385-2WD Tractor with Sun Shade, Pintle Hook	1	For SWM
16	Front end loader 385 4-WD Tractor with Sun Shade & Pintle Hook	2	For SWM
17	Front End Loader Commercial	2	For SWM
18	Truck Mounted Combine Unit 6200 Litre Capacity Jetting/Sucking Machine	1	For Liquid Waste
19	Truck Mounted Aerial Platform 50-55' height (Street Light Vehicle)	1	For Liquid Waste
20	Manhole Desilting Machine	1	For Liquid Waste

Coverage Type	SWM Coverage Area (Acres)			
	Area in Acres (2021-22)	Area in Acres (2022-23)	Percentage (2021-22)	Percentage (2022-23)
Totally Served Area	662	897	13%	18%
Partially Served Area	549	623	11%	12%
Unserved Area	3931	3622	76%	70%
Total Area	5142	5142	100%	100%

PUNJAB MUNICIPAL DEVELOPEMENT FUND COMPANY

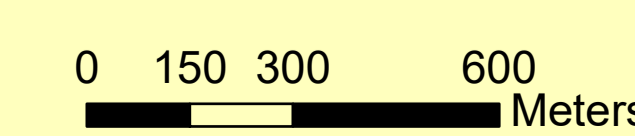


PROJECT:
PUNJAB CITIES PROGRAM (PCP)

Map Code
0412050223
Map Version
1.4

DISCLAIMER:
INFORMATION PROVIDED BY MC, PHED & OTHER SOURCES.

Scale: 1:11,000



Date

February 2023